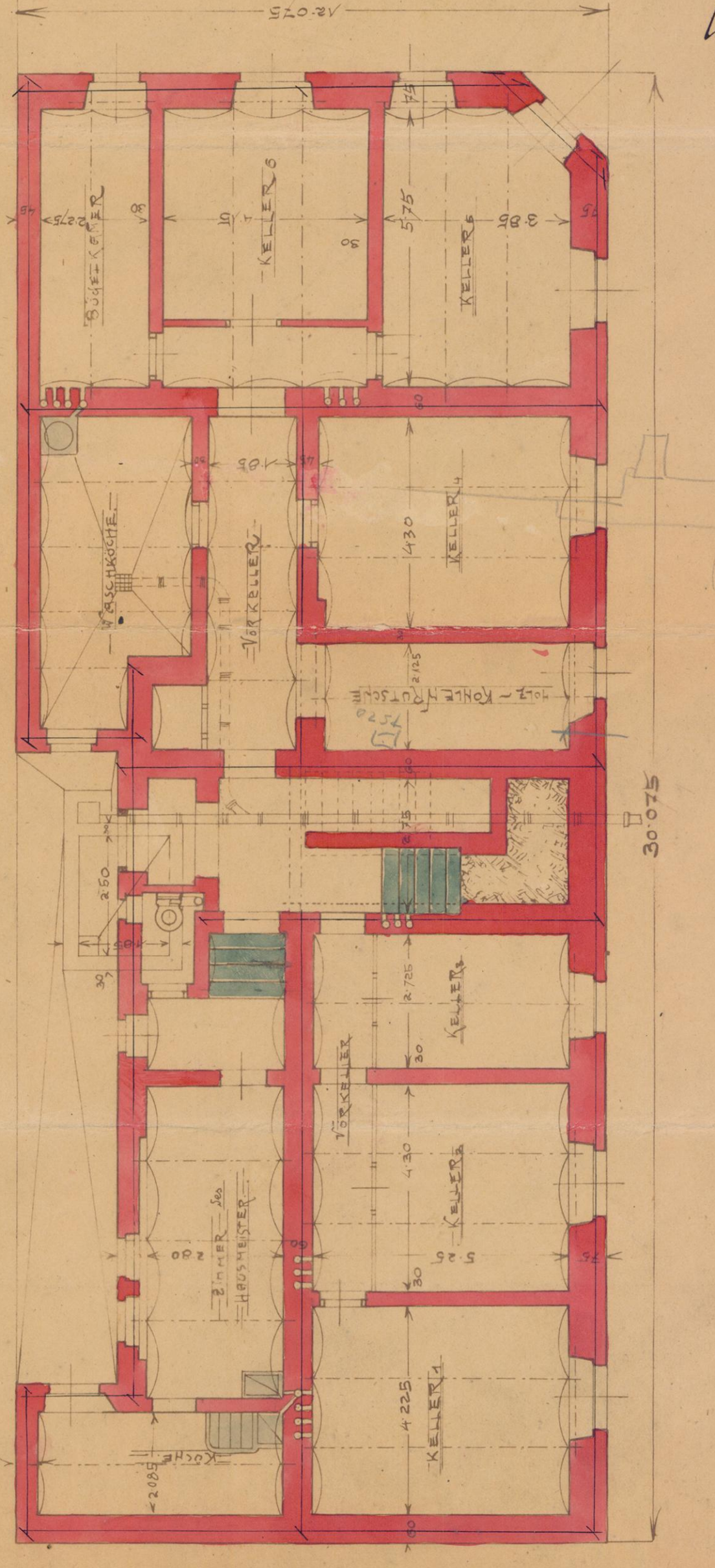
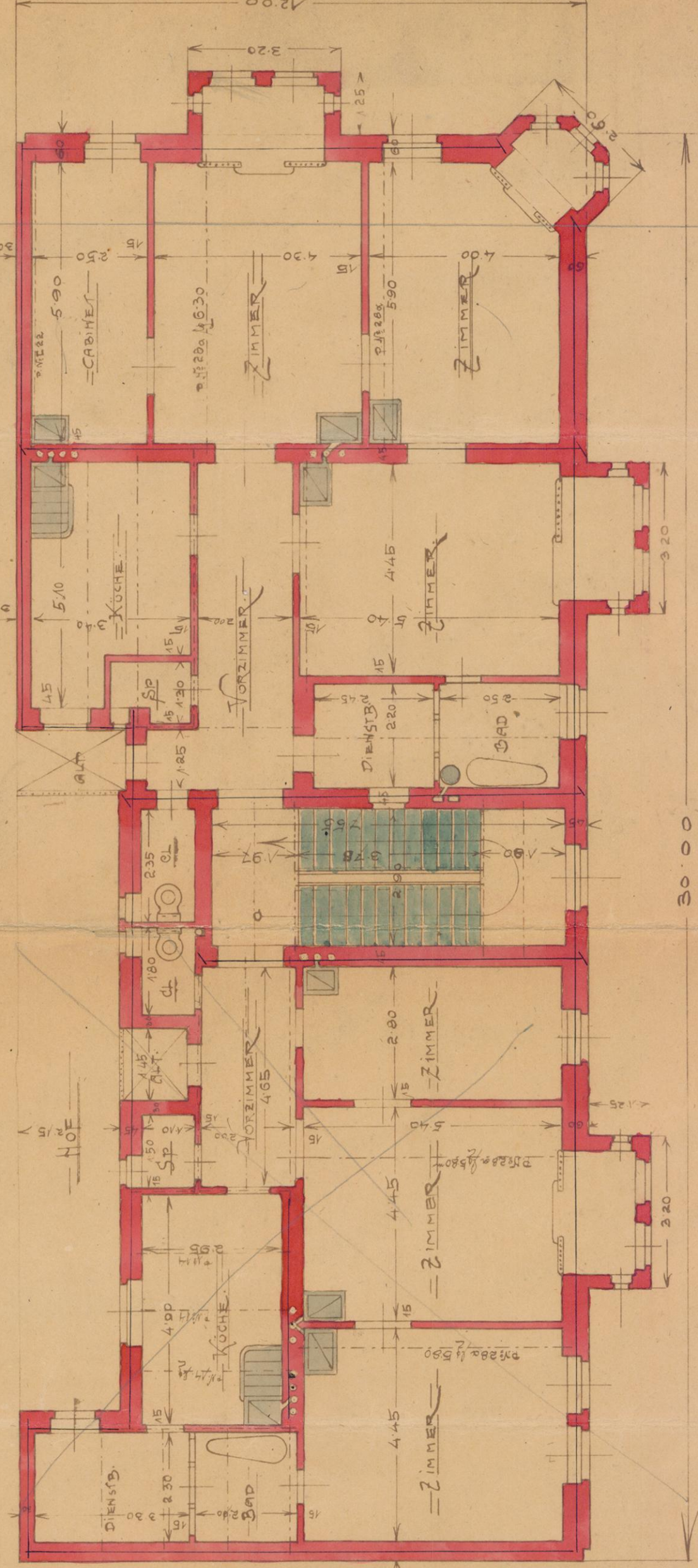
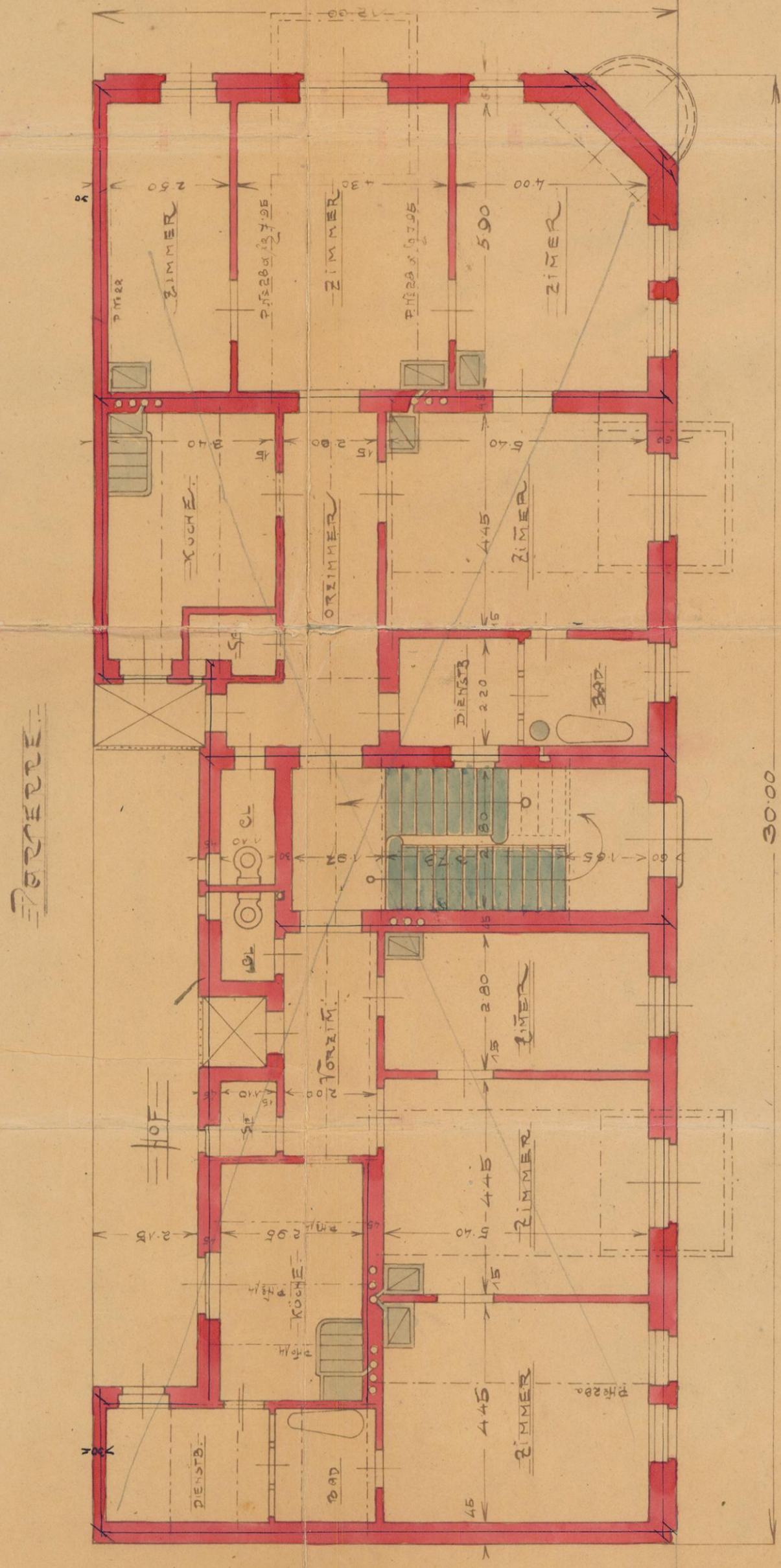
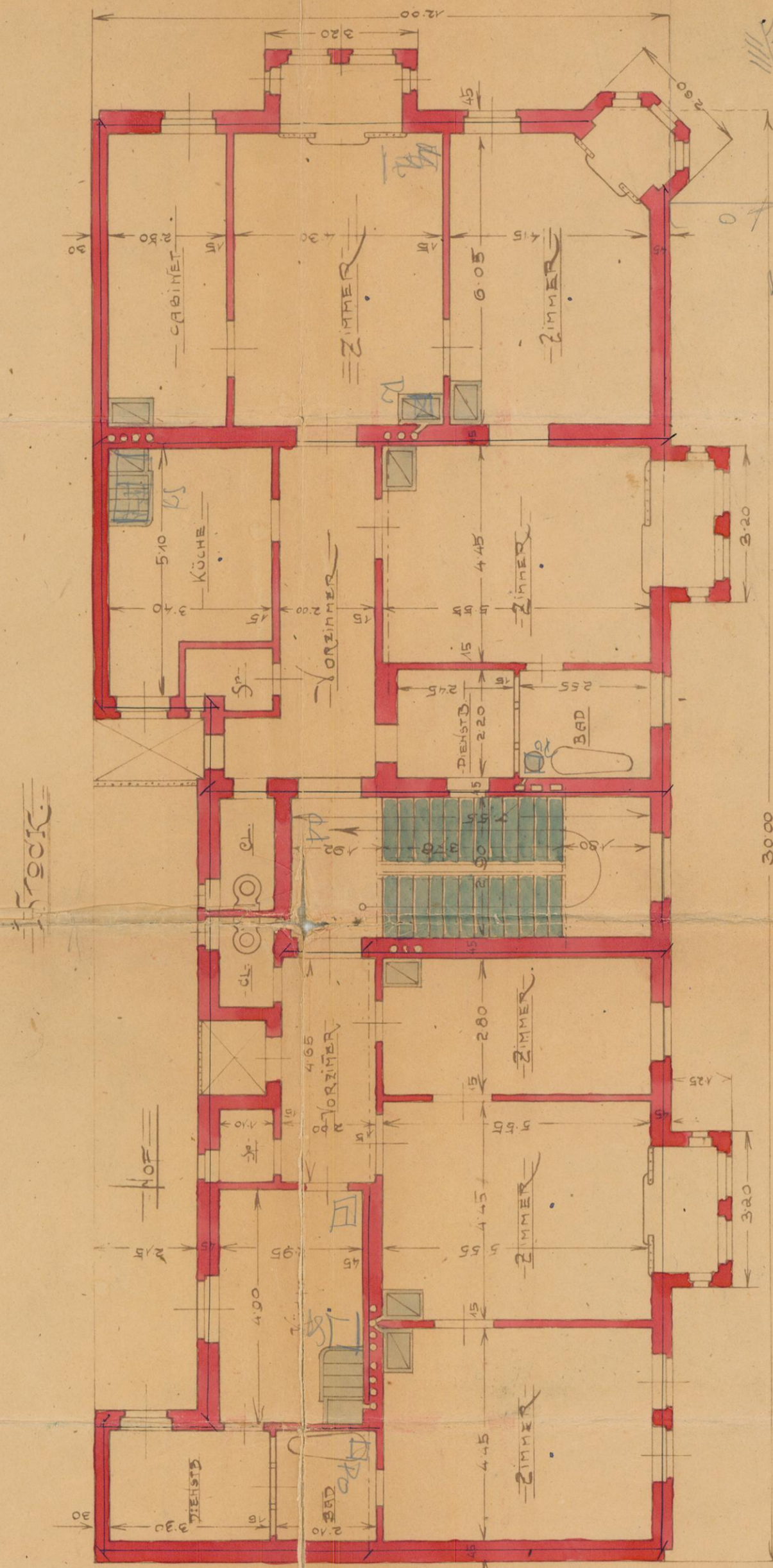




PLAN

FÜR EIN ZWEI-STÖCKIGES WOHNGEHAUSE IN DER GASSE N. 2006, EISENBERGASSE, IN NÖRDL. OSTRAU.

DES HERRN ARCHITECTEN FELIX NEUMANN IN OSTRAU.



F. Neumann

NÖRDL. OSTRAU N. 2006

N. 2006B/100